

STRACKE LAND & REALTY

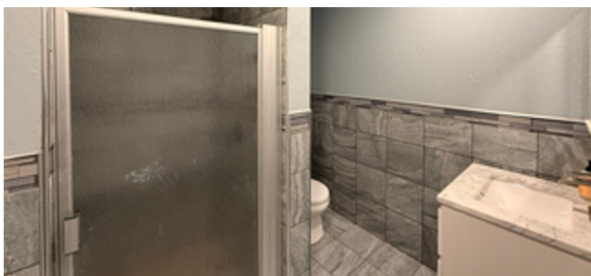
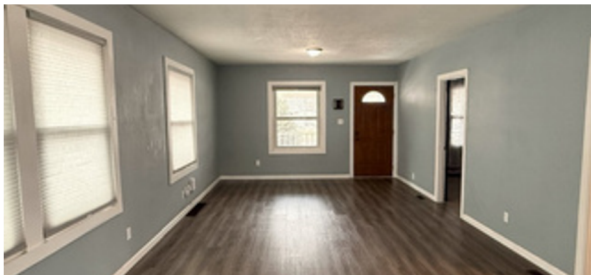
Stracke
LAND & REALTY

1142 N Minnesota Ave., Hastings

WWW.STRACKEREALTY.COM



SCAN ME

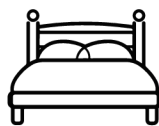


PROPERTY DESCRIPTION

True four-bedroom, two-bath home situated on a corner lot with charming updates throughout. The main floor offers tall 1930s ceilings, an open family and dining area, and an updated kitchen with ample cabinetry; appliances are included. Additional features include a full-length attic with storage or finishing potential, basement bedrooms with bath and laundry, plus driveway parking and a detached one-car garage with workspace.

PROPERTY HIGHLIGHTS

Built 1930 | 954+954sq.ft.



4 BED



2 BATH



308-730-4430



Ashley Pittman
Rural NE Realtor

